

Audley Square Newsletter

OCT 2020

NEIGHBOURLY NEWSLETTER #2 CONSTRUCTION UPDATE

Dear Neighbour,

Welcome to our second quarterly newsletter dedicated to updating our local community on current construction activities at the Audley Square Redevelopment. Over the last three months, we have been busy preparing the site for work, as well as already completing some of the most strenuous activities of the entire programme.

We have completed construction of the piling guidewall around the perimeter of site and are nearing completion of our concrete slab coring works. In addition to this, we are making good progress with the installation of Ground Source Heat Pump boreholes and pipework across the site.

We have set up the site for our occupancy with the installation of a new corner access gate on Waverton Street, complete with wheel washing facilities. We have established temporary site welfare cabins along Waverton street with our more permanent welfare cabins planned for installation along South Audley Square the week commencing the 15th November 2020.

In this newsletter, you will find additional information about how we manage these works, as well as activities you can expect us to carry out within the next quarter.

With kind regards,
Alahna Dunbar (Neighbour Liaison Manager)

Neighbour Liaison Meetings (NLM)

We would like to thank those residents who have joined the Neighbour Liaison Meetings and thank them for their feedback. The next NLM is scheduled to take place on **Tuesday 10th November at 6.30pm.**

Given social distancing guidelines, these meetings will continue to take place on Microsoft Teams until further notice.

To RSVP for one of the sessions and to receive video conference details, please email Alahna at audleysquareneighbourliaison@careysplc.co.uk.

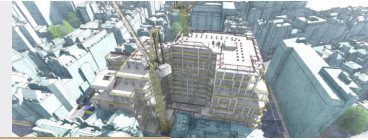
Q4 2020 SITE ACTIVITIES

- Completion of Bauer slab coring works
- Commencing installation of new perimeter secant piles
- Ground Source Heat Pump borehole and pipework installation ongoing
- New site welfare cabins will be installed in South Audley Square within the site boundary
- Gate 3 access on Waverton Street will be opened for use and site logistics

Construction Timeline



Audley Square Newsletter



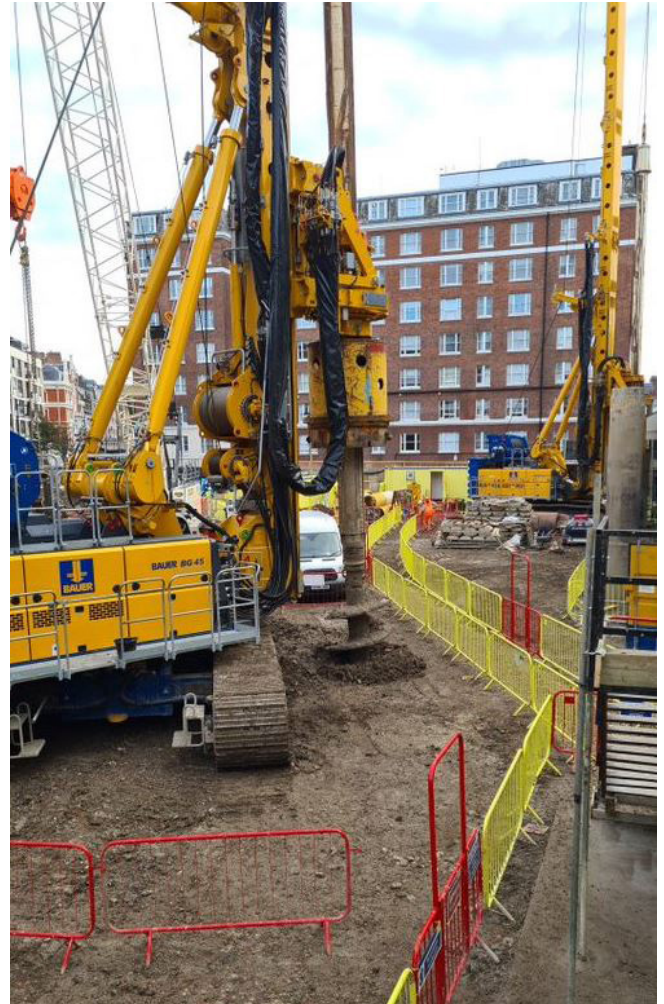
Piling Noise & Vibration Management

We understand that piling activities can be disruptive to those living and working near a construction site. In an effort to be a considerate neighbour, we employ measures to mitigate disruption from noise and vibration, as much as possible. Some of the measures we use at Audley Square are as follows:

- We have introduced working intervals for the remaining coring works. Each hour, there is a coring period for 15-30 minutes followed by no coring works for the remaining hour. By introducing these quieter periods, we aim to reduce the noise and vibration impact on neighbours.
- We use the newest, highest quality range piling rigs with low noise emissions.
- We use slow speed uni-directional spoil discharge system on rigs, which reduces any banging noises.
- We use live real-time data monitoring onsite to track noise and vibration outputs. Supervisors onsite can track the data live on a tablet and stop the works if noise limits are being approached.
- When safe to do so, acoustic barriers are placed beside the piling rigs when in order to help reduce surface level noise during coring works. Acoustic barriers will be erected 1m high along the top of the hoarding on Waverton Street once secant piling commences in this area.
- In November, we will be installing our stacked welfare cabins along South Audley Street cabins. This location will act as a natural noise barrier to the receptor buildings on South Audley Street.
- We have increased the height of the perimeter hoarding to 3m as an additional control measure to reduce noise.

These are just a few examples of the current measures to mitigate disruption on site. However, we continuously monitor and review our activities to ensure that best practice is always used and/or adopted.

We also welcome your questions and feedback to ensure we



GENERAL ENQUIRIES

audleysquarehouse@kandaconsulting.co.uk

Community Hotline Number
07738 621992



IMPORTANT INFORMATION

Security

We have appointed Avondale as our security team to maintain high levels of security in and around the site 24/7. If you notice anything suspicious on or around site, please contact our security by calling 01384 218844.

Working Hours

Site working hours as in accordance with WCC are:

Monday – Friday: 8am–6pm
Saturday: 8am–1pm